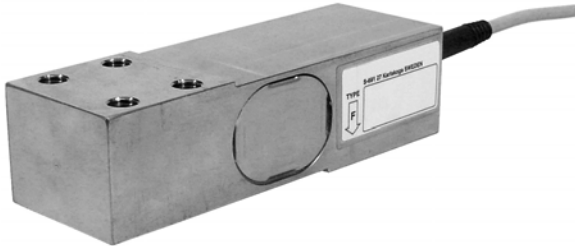


Web Tension Transducer

FEATURES

- Withstand high overload
- Torsional strength against torque forces



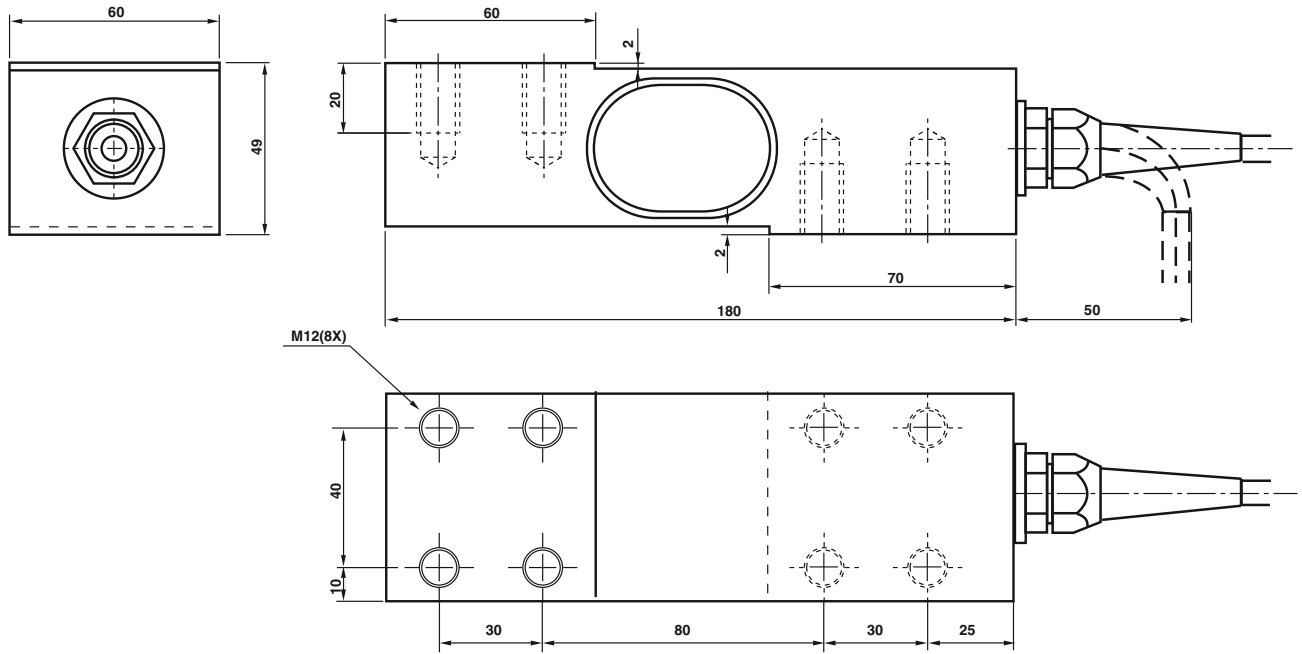
TECHNICAL DATA

Rated load (R.L.)		kN	10, 20
Combined error		% of R.O.	± 0.1
Repeatability		% of R.O.	0.02
Overload	safe	% of R.L.	100*
	ultimate	% of R.L.	200*
	recommended	V DC or AC	10
Input voltage	maximum	V DC or AC	18
		ohm	382 ± 3
Input resistance		ohm	350 ± 3
Output resistance		mV/V	1.020
Rated output (R.O.)		% of R.O.	± 0.25
Tolerance of R.O.		% of R.O.	± 2
Zero balance		°C	- 40 to + 80 (+ 100)**
Temperature range		% of output/°C	± 0.005
Temperature effect (- 10 to + 50°C)	on output	% of R.O./°C	± 0.005
	on zero balance	Gohm	> 4
Insulation resistance at 200 V DC			Stainless steel
Material			5 m shielded four conductor cable
Electrical connection			IP 67
Degree of protection			

*For load perpendicular to the transducer

** - 40 to + 100°C on demand

DIMENSIONS KIP-1



INSTALLATION EXAMPLE

